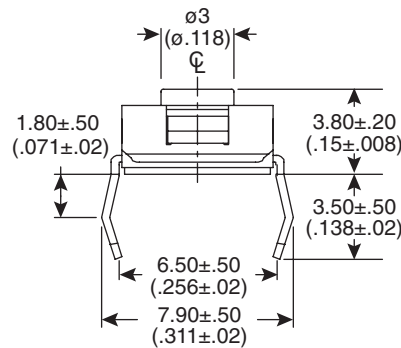
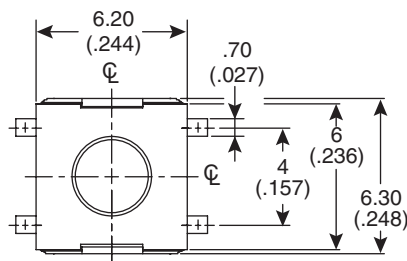
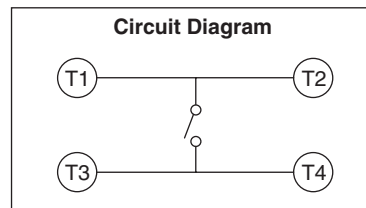
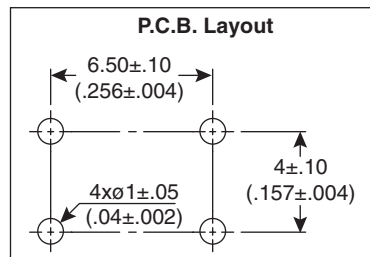


Dimensions:mm (in.)



Electrical Specifications:

- Rating: 50mA/12VDC
- Life: 500,000 cycles
- Contact resistance: 100mΩ max.
- Insulation resistance: 100MΩ min. @ 500VDC
- Dielectric Strength: 250VAC for 1 minute

Mechanical Specifications:

- Type: SPST PC
- Operating force: 160±50gf
- Operating temperature: -25°~+70°C
- Storage temperature: -30°~+80°C
- Travel: .018 ± .008 In. (0.45 ± 0.2mm)
- Stop strength: 3Kg for 15 seconds

Note:

- RoHS Compliant and process compatible with 260° solder

Materials:

- Cover: stainless steel
- Contacts: silver clad phosphor bronze
- Terminals: silver clad brass
- Base: nylon high temperature thermoplastic, black

Tactile Switch (Thru-Hole)
101-0365-EV

